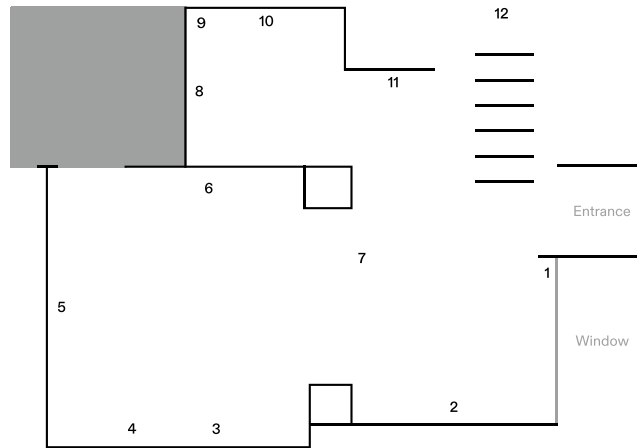
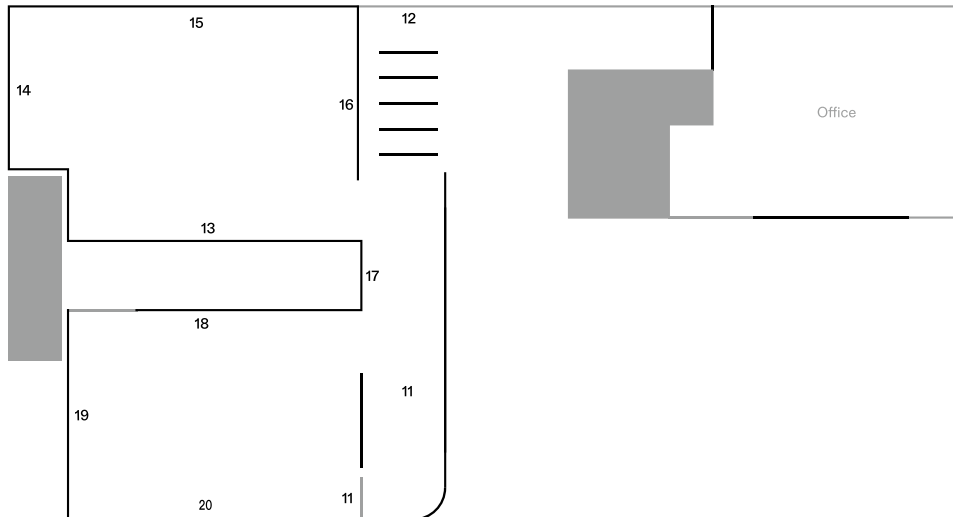


1F



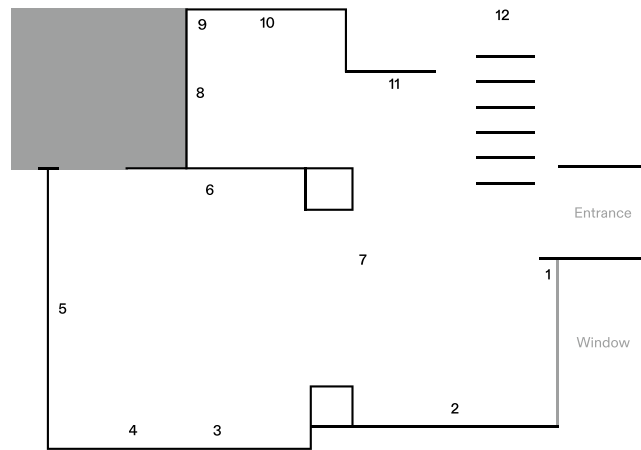
1. 박경빈, *내일을 판박이*, 2024, 밀랍, 행운이미지, 에폭시로 캐스팅 된 바위, 가변크기
2. 장예빈, *Tender Barrier*, 2025, 캔버스에 아크릴, 100 × 80 cm
3. 장예빈, *Distraction #2*, 2026, 캔버스에 아크릴, 80.3 × 60.6 cm
4. 장예빈, *Distraction #1*, 2026, 캔버스에 아크릴, 80.3 × 60.6 cm
5. 박경빈, *Nocturnal Flight : Montage 2*, 2025, 판넬 위 밀랍, 손으로 전사한 공공 아카이브 이미지, 알루미늄, 핀, 162 × 115 cm
6. 박경빈, *The Réseau on the Elephant : 1971-1972*, 2026, 나무판넬에 밀랍, 손으로 전사한 레조마크 자료, 가상이미지 필름, 스테이플러, 납, 은박, 40.3 × 102.5 cm
7. 박경빈, *Happy Quarantine! - For All Our Sakes*, 2026, 액자에 밀랍, 손으로 전사한 보도자료 이미지, 금박, PVC필름, 분류용라벨스티커, 큐빅, 프린트된 이미지, 28 × 36.5 × 19 cm
8. 박경빈, *The Réseau on the Elephant : 1969 Nov.*, 2026, 나무판넬에 밀랍, 손으로 전사한 레조마크 자료, 가상이미지 필름, 스테이플러, 납, 은박, 20 × 134 cm
9. 박경빈, *안티- 안티-- 클래식*, 2024, 스테인드글라스 기법으로 이어붙인 강화유리 파편, 레진, Variable Size/가변크기
10. 박경빈, *녹채*, 2025, 수집한 강화유리 파편, 와이어, 주석, 나무, 가변설치
11. 박경빈, *ATLantiS*, 2026, 내셔널지오그래픽과 출판된 세계지도와 아카이브 자료, 철사, 레진, 오아시스, 조경용 돌, 가변설치
12. 장예빈, *What to See*, 2024, 캔버스에 아크릴, 22.7 × 15.8

2F



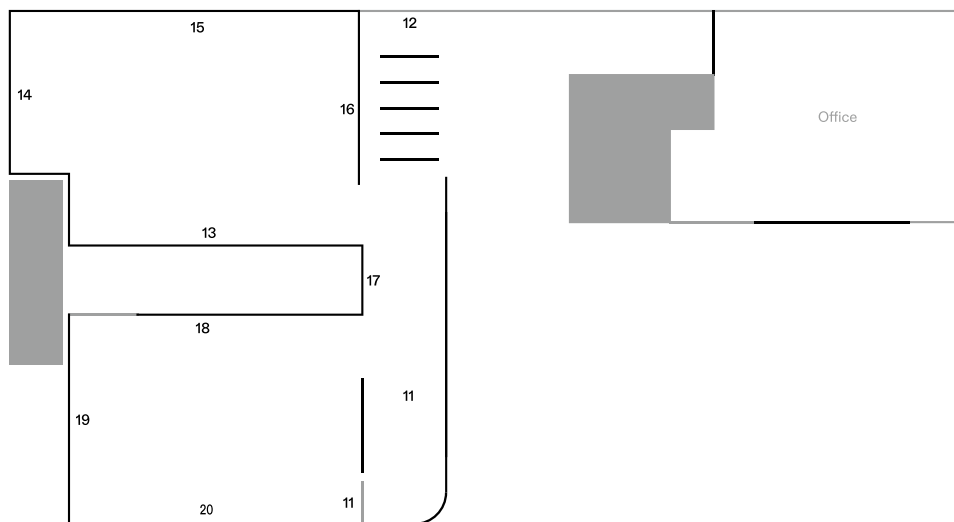
13. 장예빈, *Entangled Ties*, 2026, 캔버스에 아크릴, 130.3 × 97 cm
14. 장예빈, *The Gap*, 2026, 캔버스에 아크릴, 145.5 × 97 cm
15. 장예빈, *Surface Study #1, #2, #3*, 2025, 캔버스에 아크릴, ø 20 cm
16. 장예빈, *Head First*, 2025, 캔버스에 아크릴, ø 80 cm
17. 장예빈, *Underwater*, 2023, 캔버스에 아크릴, 45.5 × 53 cm
18. 장예빈, *Face #4, #5, #6*, 2026, 캔버스에 아크릴, 24.2 × 24.2 cm (each)
19. 박경빈, *Nocturnal Flight : Montage 3*, 2025, 나무판넬에 밀랍, 손으로 전사한 공공 아카이브 이미지, 알루미늄, 81 × 143 cm
20. 박경빈, *The Réseau on the Elephant : 1969 July*, 2026, 나무판넬에 밀랍, 손으로 전사한 레조마크 자료, 가상이미지 필름, 스테이플러, 납, 은박, 20 × 134 cm

1F



1. Kyungbeen Park, *Panbagi Tomorrow*, 2024, Beeswax, lucky charm image, epoxy-cast rock, variable size
2. Yebin Chang, *Tender Barrier*, 2025, acrylic on canvas, 100 × 80 cm
3. Yebin Chang, *Distraction #2*, 2026, acrylic on canvas, 80.3 × 60.6 cm
4. Yebin Chang, *Distraction #1*, 2026, acrylic on canvas, 80.3 × 60.6 cm
5. Kyungbeen Park, *Nocturnal Flight : Montage 2*, 2025, Beeswax on panel, hand-transferred public archive image, aluminum, pins, 162 x 115 cm
6. Kyungbeen Park, *The Réseau on the Elephant : 1971-1972*, 2026, Beeswax on wood panel, hand-transferred image data with Réseau Marks, virtual image film, staples, lead, silver leaf, 40.3 × 102.5 cm
7. Kyungbeen Park, *Happy Quarantine! - For All Our Sakes*, 2026, Beeswax in frame, hand-transferred press release image, gold leaf, PVC flim, Organizing label stickers, Rhinestone, printed image, 28 x 36.5 × 19 cm
8. Kyungbeen Park, *The Réseau on the Elephant : 1969 Nov.*, 2026, Beeswax on wood panel, hand-transferred image data with Réseau Marks, virtual image film, staples, lead, silver leaf, 20 × 134 cm"
9. Kyungbeen Park, *Anti- Anti-- Clash*, 2024, Tempered glass shards joined with stained glass technique, resin, Variable Size
10. Kyungbeen Park, *Nokchae*, 2025, Tempered glass shards, wire, tin, wood, variable size
11. Kyungbeen Park, *ATLAntiS*, 2026, National Geographic, published world maps and archive materials, wire, resin, floral foam, landscaping stones, variable size
12. Yebin Chang, *What to See*, 2024, acrylic on canvas, 22.7 × 15.8 (each)

2F



13. Yebin Chang, *Entangled Ties*, 2026, acrylic on canvas, 130.3 x 97 cm
14. Yebin Chang, *The Gap*, 2026, acrylic on canvas, 145.5 × 97 cm
15. Yebin Chang, *Surface Study #1, #2, #3*, 2025, acrylic on canvas, ø 20 cm
16. Yebin Chang, *Head First*, 2025, acrylic on canvas, ø 80 cm"
17. Yebin Chang, *Underwater*, 2023, acrylic on canvas, 45.5 × 53 cm
18. Yebin Chang, *Face #4, #5, #6*, 2026, acrylic on canvas, 24.2 × 24.2 cm (each)
19. Kyungbeen Park, *Nocturnal Flight : Montage 3*, 2025, Beeswax on wood panel, hand-transferred public archive image, aluminum, 81 × 143 cm
20. Kyungbeen Park, *The Réseau on the Elephant : 1969 July*, 2026, Beeswax on wood panel, hand-transferred image data with Réseau Marks, virtual image film, staples, lead, silver leaf, 20 x 134 cm