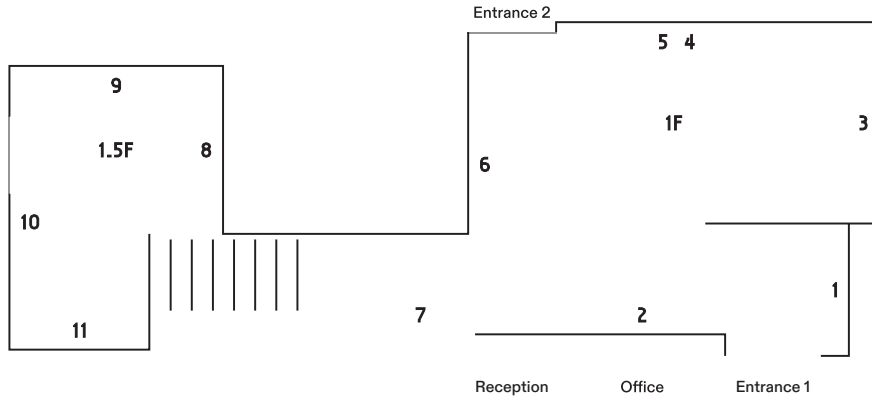
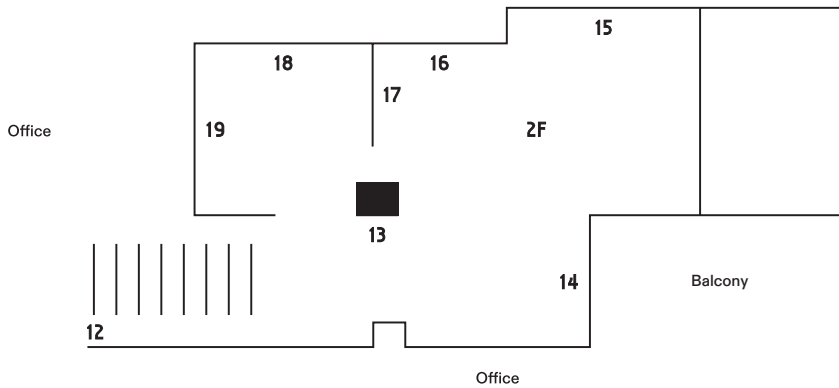


1F



1. 박신영, Shinyoung Park, *녹색증기의 도시, City of Green Vapor*, 2022-24, Oil on canvas, 45.5 × 37.9 cm
2. 송승은, Seungeun Song, *진짜 열쇠를 찾는 방법, Ways to Find The Key*, 2024, Oil on canvas, 162.2 × 130.3 cm
3. 송승은, Seungeun Song, *모험을 시작할 때는 물 한 잔이 필요하다, We Need a Glass of Water When We Start an Adventure*, 2024, Oil on canvas, 181.8 × 181.8 cm
4. 송승은, Seungeun Song, *그녀는 모든 것을 자세히 본다, She Looks at Everything Closely*, 2024, Oil on canvas, 40.9 × 31.8 cm
5. 송승은, Seungeun Song, *사물에 기록된 시간, Time Recorded on Objects*, 2024, Oil on canvas, 40.9 × 31.8 cm
6. 박신영, Shinyoung Park, *소유즈, Soyuz*, 2024, Oil on canvas, 145.5 × 89.4 cm
7. 송승은, Seungeun Song, *가족의 색이 바래고 구름이 피어나는 동안 제자리에 있던 것들, Things That Remained in Place While the Leather Faded and Clouds Bloomed*, 2024, Ink on paper, 20.9 × 14.7 cm
8. 송승은, Seungeun Song, *오렌지 색의 눈과 증발하는 몸, Orange Eyes and Evaporating Body*, 2024, Oil on canvas, 45.5 × 37.9 cm
9. 송승은, Seungeun Song, *가족의 색이 바래고 구름이 피어나는 동안 제자리에 있던 것들, Things That Remained in Place While the Leather Faded and Clouds Bloomed*, 2024, Oil on canvas, 162.2 × 130.3 cm
10. 송승은, Seungeun Song, *정물화(깃털과 물 잔), Still life (Feather and Water Cup)*, 2024, Oil on canvas, 40.9 × 31.8 cm
11. 송승은, Seungeun Song, *비밀, 두루마리, 편지, Secrets, Scrolls, Letters*, 2024, Oil on canvas, 116.8 × 91 cm

2F



12. 송승은, Seungeun Song, *오랫동안, For a Long Time*, 2024, Oil on canvas, 45.5 × 37.9 cm
13. 박신영, Shinyoung Park, *공원, Park*, 2024, Ink and gouache on paper, 15 × 22.3 cm
14. 박신영, Shinyoung Park, *멀홀랜드 드라이브, Mulholland Drive*, 2024, Oil on canvas, 53 × 40.9 cm
15. 박신영, Shinyoung Park, *항해사의 비행, Flight of The Navigator*, 2024, Oil on canvas, 227.3 × 181.8 cm
16. 박신영, Shinyoung Park, *야간산책, A Night Walk*, 2024, Oil on canvas, 65.1 × 53 cm
17. 박신영, Shinyoung Park, *다운힐의 새, Downhill Bird*, 2024, Oil on canvas, 40.9 × 31.8 cm
18. 박신영, Shinyoung Park, *일몰의 그림자, Shadow of Sunset*, 2024, Oil on canvas, 40.9 × 31.8 cm
19. 박신영, Shinyoung Park, *출구없는 길의 유령, The Ghost of The Eternal Road*, 2024, Oil on canvas, 145.5 × 97 cm

**Shinyoung Park • Seungeun Song**

**If we remember everything**

**2024.05.30 – 2024.06.29**

From May 30th to June 29th, KICHE holds a duo exhibition, *If we remember everything*, by artists Shinyoung Park and Seungeun Song. This exhibition builds upon the artists' ideas of, "What if we remembered everything? This uncanny imagination challenges us to look back on those that piled up in us." With this in mind, the two artists' use of "light" reveals the subtle inner emotions and drives the pictorial composition and expression (found in brush strokes, color, overlap, etc) as an axis of canvas operations.

Shinyoung Park uses landscape painting as the framework of his work. He first prints scenes, characters, and objects from cartoons or movies such as *Blade Runner* and *Mulholland Drive*, cuts them into pieces, gathers them, and collages them into random landscapes and scenes. Based on this collection, he determines the larger composition and tone of the painting and further captures the subtle tension mixed with complex emotions by building up layers of paint in many thin layers on the canvas. In his depiction of these dramatic moments, such as the spaceship "Soyuz" crash-landing on a sea colored in red by the sunset, a car abandoned in a deep green field or forest, dinosaur fossils fading away, and a wild dog staring with empty eyes outside the screen in "Flight of The Navigator," the viewer can detect an "invisible threat."

Seungeun Song puts together pieces of analog animation (characters, objects, parts of the background, etc.) into composition and builds structure around them with line drawings. In this way, she creates a moment with typical elements such as the character's body, cup, table, bed, or draping cloth and brings life to a sense of her unique narrative. As seen in "Things that Remained in Place While the Leather Faded and Clouds Bloomed" and "We Need a Glass of Water When We Start an Adventure," her paintings set the direction of the light and hold the thoughts and emotions that seep through her mind while she works on them. On the other hand, the methodology of the work clearly evolved from previous works as it further embodies the changes seen at the Kumho Museum of Art exhibition; it builds on the contemplation and practices to achieve aesthetic balance that do not lean too far toward narrative or materiality.

The two artists' canvases that sway between past and present, fiction and reality, and figuration and non-figuration are both constructive and narrative. As seen earlier, this impression is born out of the fact that they experiment and specify forms in the context of imaginary landscapes (Shinyoung Park) and constructive semi-abstraction (Seungeun Song), while actively capturing their worldview and innermost emotions.

In many realms, the questions that the two artists pose in this exhibition do not linger at the sentimental level of simply listing fragments of memories or emotions. On the contrary, they serve as a solid reference point to reflect and examine everything that surrounds us as they are, along with the questions of, "what are the things that make me?" and "what does it mean to be true to myself?".

## CV

**Shinyoung Park(b.1984)** lives and works in Seoul. He has held solo exhibitions including *Ray vapour and darkness*(A-Lounge, Seoul, 2020), *Personally Permitted Themes*(Keep in Touch Seoul, Seoul, 2020), *On the Eternal Road*(OCI Museum of Art, Seoul, 2019). The artist has staged various group exhibitions such as *If we remember everything*(KICHE, Seoul, 2024), *You Never Saw It*(KICHE, Seoul, 2021), *Today's landscape*(Gyobo artspace x Hapjungjugu, Seoul, 2020), *From the Face*(2/W, Seoul, 2018), *A planet filled with void*(Hapjungjigu, Seoul, 2018).

**Seungeun Song(b.1991)** lives and works in Seoul. She has held solo exhibition of *Slippery teacup*(Artside Gallery, Seoul, 2022), *Grab the Slush*(Keep in Touch Seoul, Seoul, 2020). She has staged various group exhibitions such as *If we remember everything*(KICHE, Seoul, 2024), *A Glimpse of Our Time*(Kumho Museum of Art, Seoul, 2023), *Today, Moment, Emotion*(Artside Gallery, Seoul, 2021), *BGA Showroom*(BGA, Seoul, 2021), *A planet filled with void*(Hapjungjigu, Seoul, 2018). The artist is also selected by Seoul Foundation's Arts and Culture Support Project(2022), Art support project RE:SEARCH(2021), and First art support (2017).