

PRESS RELEASE

KICHE, Seoul, presents
solo exhibition by **Jang Pa**

The Woman without Qualities

On view June 9 – July 23, 2022



Exhibition view of *The Woman without Qualities* at KICHE, Seoul
Image Courtesy of KICHE © Jang Pa

From June 9th to July 23rd, 2022, KICHE holds Jang Pa's solo exhibition, *The Woman without Qualities*. In her first solo exhibition with KICHE. The artist presents about 20 works, including the *Lady X Series* which started in 2015, *Mama Series*, *A Common Woman Series*, *Man from Earth*, and *The Jewels*. The exhibition begins with Robert Musil (1880-1942)'s unfinished novel, *A Man without Qualities* (1930-42), in which the protagonist of the novel, Ulrich wishes to become a "man without qualities." However, this absence of identifiable traits paradoxically renders him open to adopt any quality.

KICHE

20, Bukchon-ro 5ga-gil, Jongno-gu, Seoul, Korea
+82-2-533-3414
info@gallerykiche.com
www.gallerykiche.com

The Woman without Qualities

"Feminist identity" remains an important theme of the artist's practice. Jang Pa brings to the fore the "feminine qualities" that are considered negative in the male-dominated hierarchical system and imbues positivity onto these qualities. While she begins with an exploration of the "Femininity," she reflects on the sensory systems that universalize the feminine perspective and disturb the category of "woman" itself and carefully chooses the most fitting surface finishes and textures of her paintings. Since her *Woman/Figure Series* (2020), which borrows a classical statue as a motif, Jang Pa has actively incorporated art historical or cultural icons into the oeuvre to further materialize her artistic interests.

Triangle of Lamentation (2022), a large-scale painting about two meters tall, references Michelangelo's marble sculpture, *Pieta Bandini*, and *A Common Woman Series*, a medium-sized painting, borrows the iconography of the Virgin Mary holding baby Jesus. In line with the aforementioned context, these allusions demonstrate that the artist's attention to "femininity" has evolved beyond the individual to the more universal. At the same time, her *Mama Series*, in which the illustrative texture is further heightened, amplifies the curious beauty of intestines, eyeballs, and fetuses as they merge and mix.



Man from Earth_3

2022

Oil on canvas

20.8 x 15.8 cm

Courtesy of KICHE © Jang Pa

About Jang Pa

Jang Pa (b.1981) graduated Seoul National University with a BFA in both Painting and double major in Aesthetics, MFA in Painting. Jang Pa has held solo exhibitions at IAP Warehouse Gallery (2020, Incheon), DOOSAN Gallery Seoul (2018, Seoul), DOOSAN Gallery New York (2017, New York), Seoul Olympic Museum of Art (2016, Seoul), Makeshop Art Space (2015, Paju), Gallery Zandari (2015, Seoul), OCI Museum of ART(2011, Seoul), Alternative Space HUT (2009, Seoul). Jang Pa has staged and participated in various group exhibitions at D/P (2020, Seoul), Post Territory Ujeongguk (2019, Seoul), Museum of Art Seoul National University (2018, Seoul), Art Space Pool (2017, Seoul), Seoul Museum of Art (2015, Seoul), DOOSAN Gallery Seoul (2015, Seoul), OCI Museum of ART (2015, Seoul), BMOCA (2015, Paju), Seoul Olympic Museum of Art (Seoul) and more.



Mama Series_1
2022
Oil on canvas
130.3 x 130.3 cm
Courtesy of KICHE © Jang Pa



Triangle of Lamentation
2022
Oil on canvas
259.1 x 193.9 cm
Courtesy of KICHE © Jang Pa



Lady X series

2022

Oil on canvas

130.3 x 193.9 cm

Courtesy of KICHE © Jang Pa



Exhibition view of *The Woman without Qualities* at KICHE, Seoul
Image Courtesy of KICHE © Jang Pa



A Common Woman series_1

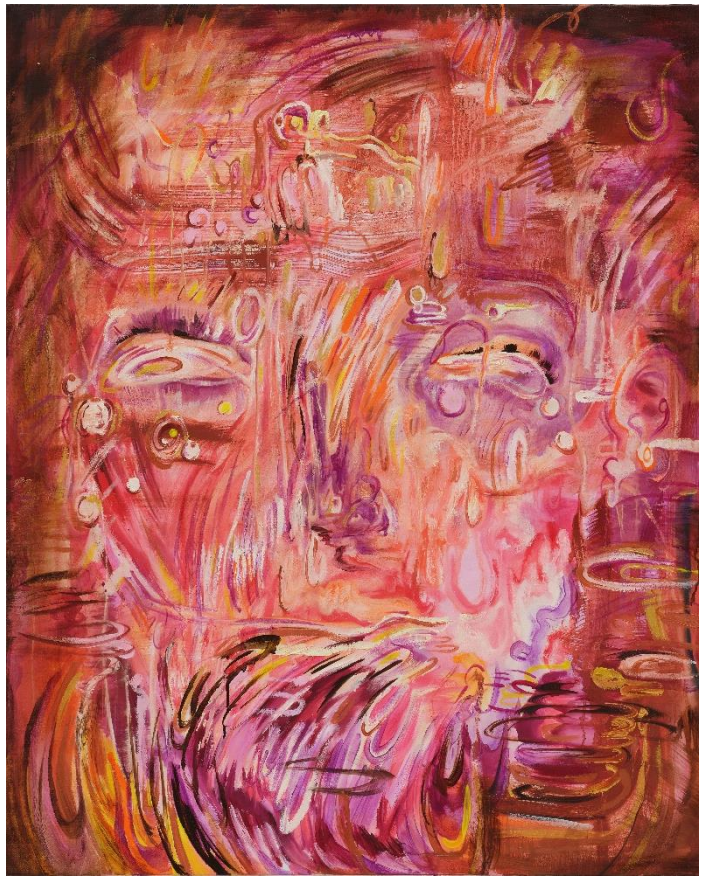
2022

Oil on canvas

162.2 x 130.3 cm

Courtesy of KICHE © Jang Pa

Man from Earth_2
2022
Oil on canvas
90 x 71.7 cm
Courtesy of KICHE © Jang Pa





A Woman without Qualities_1

2022
Oil on canvas
72.5 x 49.7 cm
Courtesy of KICHE © Jang Pa

The Jewels_3

2022
Acrylic golden leaf, and mixed media on shaped canvas
72.5 x 49.7 cm
Courtesy of KICHE © Jang Pa





Exhibition view of *The Woman without Qualities* at KICHE, Seoul
Image Courtesy of KICHE © Jang Pa

About KICHE

Based in Seoul, KICHE aims to present the works of both local and international contemporary artists, building an alternative platform for communication, cooperation and partnership within and outside of the art scene. The gallery continues to pursue its vision of experimentation by closely collaborating with a range of experts and institutions, establishing itself as a creative and engaging gallery. The gallery works to support its artists' unique practices and to expand their opportunities and recognition.

Text translated by: Kim Seorim

Media Contact

Hyeonjung LEE, KICHE
Hyeonjung.lee@gallerykiche.com